



**ETU-Link Technology Co., LTD**

**Optical Transceivers **Manufacturer****

2018 **Version**



# CONTENT

---

- 1 Who we are?**
- 2 What can we do for you?**
- 3 ETU family**
- 4 ETU culture**



1

**Who we are?**

## ▶ ETU-link Technology

Introduction

Products

R&D  
Marketing

Culture



### **ETU-Link Technology Co., Ltd (ETU-Link)**

One high-tech company founded by a group of experienced marketing & technical person, we are located in Shenzhen and focus on the developing & marketing new products and technologies in Optical Transceiver field.



## ▶ Production Capacity

➤ Produce with efficient, high quality. Meet customers' needs, delivery in time.



ETU Team

30  
workers

40  
workers

50-60  
workers



Production Capacity

50-70K

40K

30K

Introduction

Products

R&D  
Marketing

Culture



## R&D Trend

Introduction

Products

R&D  
Marketing

Culture



2014

- In order to support the customers with more competitive, quality optical transceivers, built a 600 square meter production base.
- 155M~10G Series products

01

02

2015~2016

- Enlarge the engineer team, Optimize 1.25G Series Products
- Set up 10G production line
- Plan 25G SFP28 program , sponsored by Shenzhen government.
- Overseas exhibition plan: CommunicAsia & ECOC

2017

- New production base with 1500 square meter
- 100G QSFP28 Project
- The national high-tech enterprises application
- Set up the device workshop

03

04

2018

- 25G SFP28 SR LR ER quantity production
- 100G QSFP28 trial production
- 200G 400G market research.



## ► R&D Team

Introduction

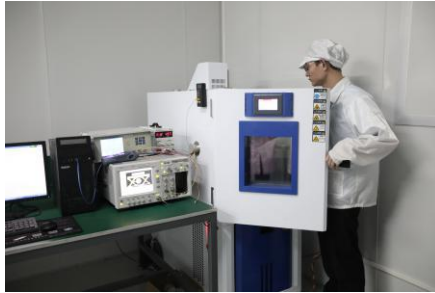
Products

R&D  
Marketing

Culture



- With a professional R&D team and experienced engineers in the field of communication, we have a strong R&D capability.



Our experienced R&D team and brilliant marketing team, who are providing solid technology guarantee system and dependable & efficient service.

## ▶ Company Strategy

Introduction

Products

R&D  
Marketing


Culture




➤ Our continual pursuit is win your moving!

A decorative graphic consisting of several circles of various sizes and colors (teal, white, grey) scattered across the left side of the slide.A circular icon containing a target symbol with an arrow hitting the bullseye.

**“Advanced Technology” & “Quality products”**  
as our innovative competitiveness.

A circular icon containing a group of stylized human figures.

**Excellent service, competitive price, prompt delivery and development of new products** are all details we perceive as staples in customer care.

A circular icon containing a bar chart with an upward-pointing arrow.

Achieve mutual **win-win** situation between customers, employees, business.



## ▶ Partners

Introduction

Products

R&D  
Marketing

Culture





2018 CIOE 易天·光通信欢迎您



2

**What can we do for you?**

## ▶ Products

Introduction

Products

R&D  
Marketing

Culture



### Rate

- Normal Rate: 155M, 1.25G, 2.5G
- Other rate: 622M, 4.25G
- Normal Wavelength: 850nm, 1310nm, 1550nm



### Fiber type

- Dual Fiber: Muilt Mode is up to 2km, Single mode is up to 160km
- Single Fiber: SC & LC, up to 120km
- CWDM: LC, up to 160KM



### Application

- Ethernet
- SDH/SONET

## Products

Introduction

Products

R&D  
Marketing

Culture



SFP+ Series

### Rate

Normal rate : 10G  
Other rate : 3G、 6G、 8G  
Normal wavelength : 850nm,  
1310nm、 1550nm

### XFP Series



### Fiber type

Dual : MM 300M , SM 100km  
Single : LC , up tp 80km  
CWDM&DWDM

## ▶ Products

Introduction

Products

R&D  
Marketing

Culture



### ◀ 40G QSFP+

- Connector: MPO, LC
- Distance: MM 2km, SM 30km



### ◀ 100G CFP2

- Connector: MPO
- Distance: 150M, 10KM, 30KM

### 25G SFP28 ▶▶

- Connector: LC
- Distance: 100M, 10KM



### 100G QSFP28 ▶▶

- Connector: MPO, LC
- Distance : 100M, 10KM, 30KM



## Products

Introduction

Products

R&D  
Marketing

Culture



### 10G XENPAK

- Connector: MPO, LC
- Distance: MM 2km, SM 30km



### 1X9

- Connector: SC
- Distance: 20KM

### 10G X2

- Connector: SC
- Distance: 300M, 10KM, 40KM, 80KM



### 100G CFP4

- Connector: LC
- Distance: 30KM





## ▶ Products

Introduction

Products

R&D  
Marketing

Culture



10G SFP+ DAC



10G SFP+ AOC



40G QSFP+ DAC



40G QSFP+ AOC



## ▶ Products

Introduction

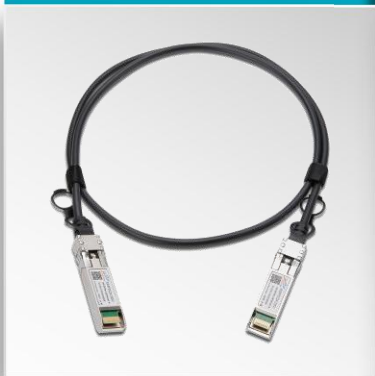
Products

R&D  
Marketing

Culture



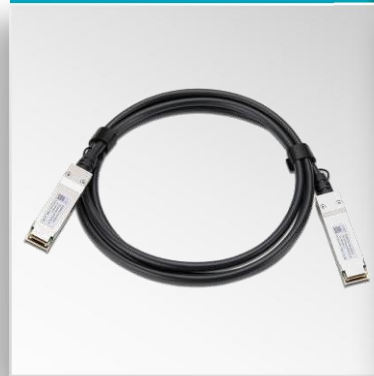
25G SFP28 DAC



25G SFP28 AOC



100G QSFP28 DAC



100G QSFP28 AOC



## ▶ Products

Introduction

Products

R&D  
Marketing

Culture



### Patch cord



### Pigtail



### Adaptor



### Media Converter



**PROFESSION**

**CONCENTRATION**



**ETU family**

## ▶ Test Equipment

Introduction

Products

R&D  
Marketing

Culture



Eye Diagram Instrument



Optical Power Meter



Error Detector

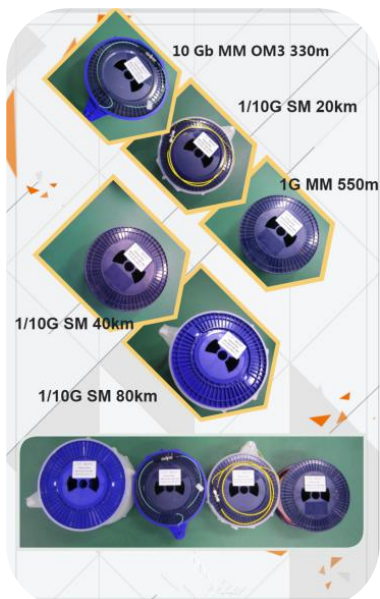
## ▶ Test Equipment

Introduction

Products

R&D  
Marketing

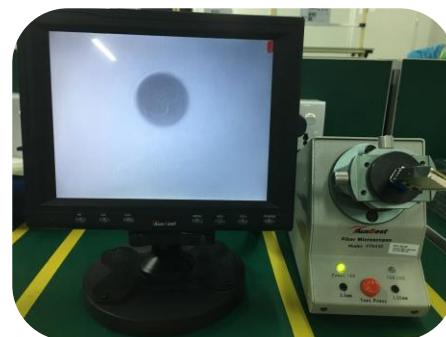
Culture



Testing Fiber



Optical Attenuator



Fiber Microscopes



## ▶ Test Equipment

Introduction

Products

R&D  
Marketing

Culture



Switch Rack



Switch



High&low Temperature  
Texting Box

## Certifications

Introduction

Products

R&D  
Marketing

Culture



## ▶ Workshop Display

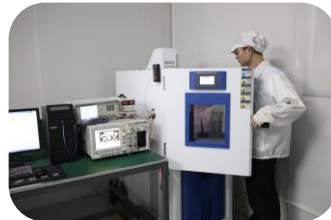
---

Introduction

Products

R&D  
Marketing

Culture



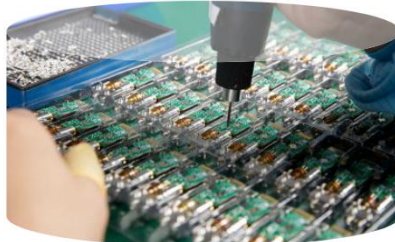
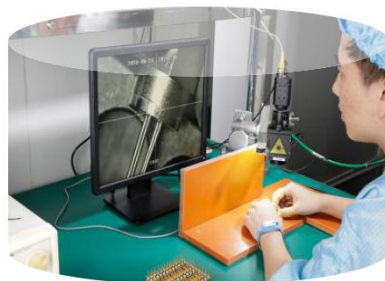
## ▶ Workshop Display

Introduction

Products

R&D  
Marketing

Culture



# Work System

Introduction

Products

R&D  
Marketing

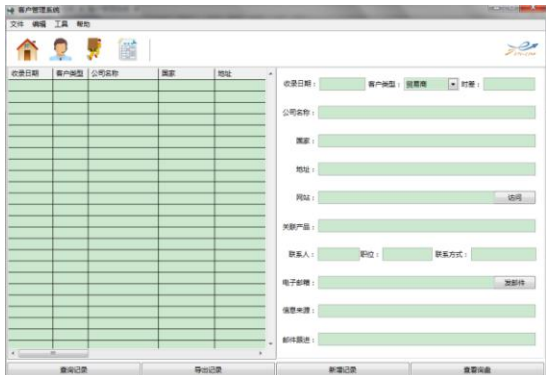
Culture



Personnel  
Management  
System



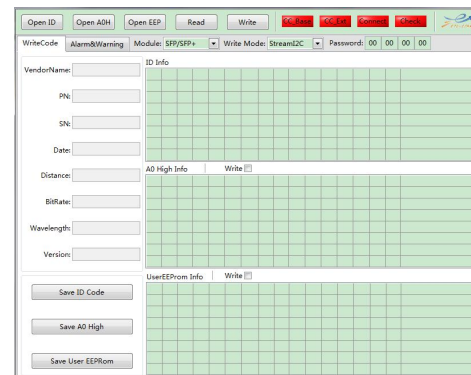
ERP  
System



Customer Management System



Examination System



Code Writing Software



## ▶ Exhibition

Introduction

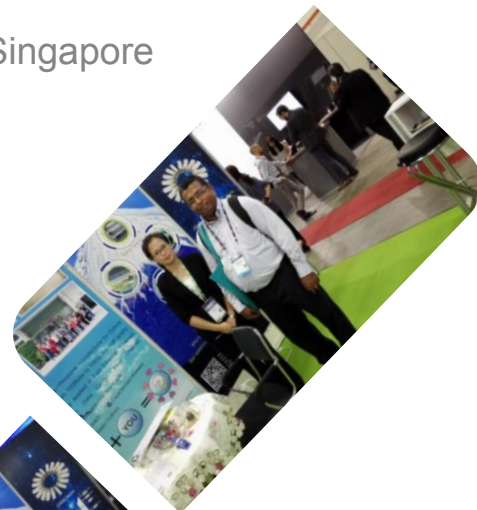
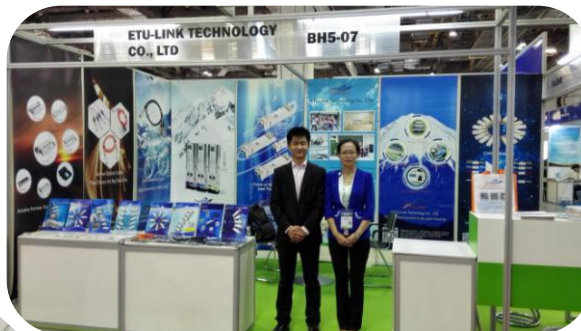
Products

R&D  
Marketing

Culture



➤ 2017.5.23-25 CommunicAsia in Singapore





## ► Exhibition

Introduction

Products

R&D  
Marketing

Culture



► 2017.9.18-20 ECOC in Sweden



## ► Exhibition

Introduction

Products

R&D  
Marketing

Culture



► 2018.4.24-27 SVIAZ ICT in Russia



## ► Exhibition

Introduction

Products

R&D  
Marketing

Culture



► 2018.6.26-28 Communic Asia in Singapore





## Exhibition

Introduction

Products

R&D  
Marketing

Culture



➤ 2018.9.5-8 CIOE in Shenzhen



## ► Exhibition

Introduction

Products

R&D  
Marketing

Culture



► 2018.9.24-26 ECOC in Rome



## ▶ Who we meet?

Introduction

Products

R&D  
Marketing

Culture





## ▶ Home Market

Introduction

Products

R&D  
Marketing

Culture



### Sales Area

In the highly competitive shenzhen city, by high quality, professional services, win the trust and support of customers, has obtained the steady development of space.



## ► International Market

Introduction

Products

R&D  
Marketing

Culture



Our customers are customers all over the world, including India, the Czech Republic, Taiwan, the United Kingdom, Russia, Honduras, Argentina, the United States, Canada and more, providing cost-effective products and professional technical support





**ETU Culture**

## ▶ Activities

Introduction

Products

R&D  
Marketing

Culture



### ➤ Staff Events

Organize colorful activities, such as tug-of-war, cooking competition, to enrich The work life of the staff, improve Team cohesion





## Activity

### Staff Trips



Introduction

Products

R&D  
Marketing

Culture



## Activity

### ➤ Birthday Party



Introduction

Products

R&D  
Marketing

Culture





# THANKS!

ETU-Link Technology Co., LTD

**Address:** 4th Floor, C Building, JinBoLong Industrial Park, Qingquan Road, LongHua District, Shenzhen city, GuangDongProvince, China 518109

**Tel :** 0755-23284603

**Web :** [www.etulinktechnology.com](http://www.etulinktechnology.com)